

MONTHLY MEMBERSHIP PROGRESS REPORT

LOCATION CALIFORNIA

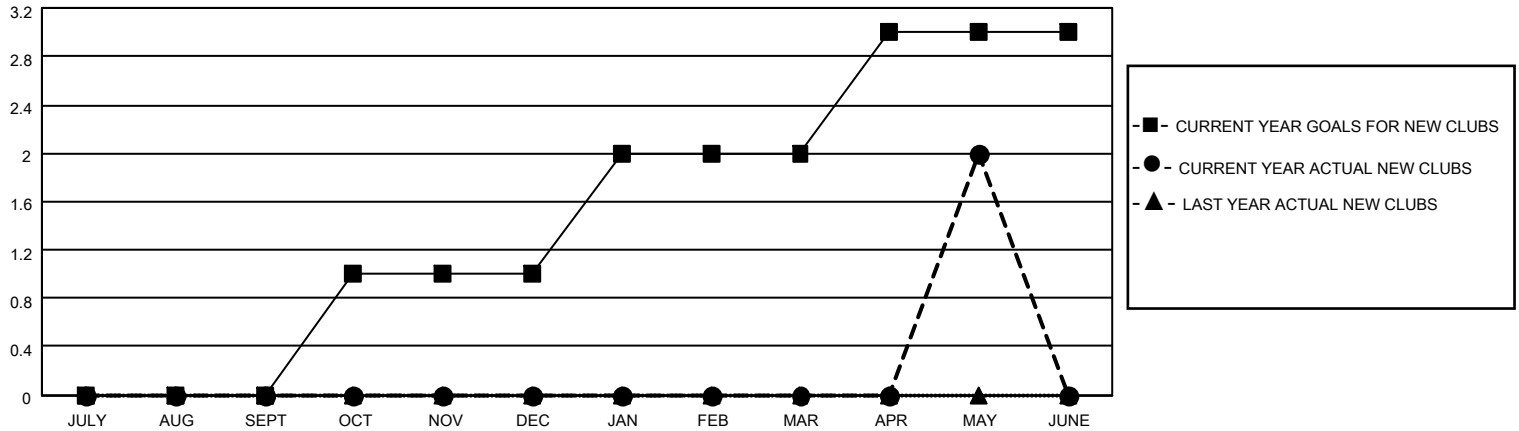
District 4 L3

Results as of: 5/31/2022

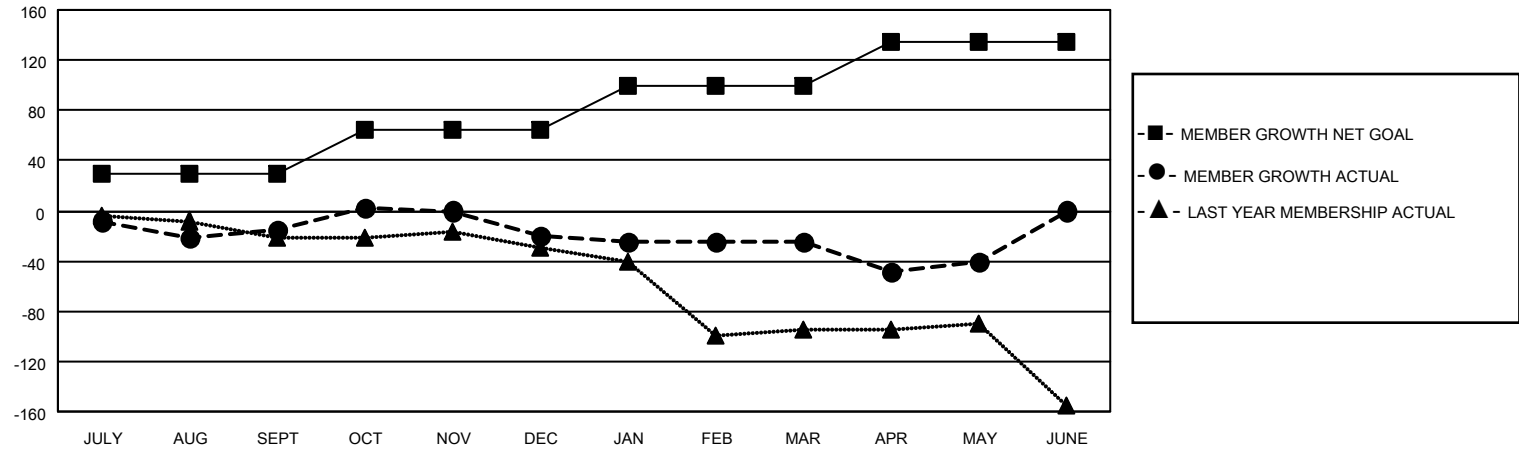
Clubs			
RESULTS FOR 2021-2022			
QUARTER	NEW CLUB GOAL	NEW CLUBS	DROPPED CLUBS
JULY/AUG/SEPT	0	0	1
OCT/NOV/DEC	1	0	5
JAN/FEB/MAR	1	0	1
APR/MAY/JUNE	1	2	0

Members			
RESULTS FOR 2021-2022			
QUARTER	MEMBER GROWTH NET GOAL	MEMBER GROWTH ACTUAL	DROPPED MEMBERS ACTUAL (including transfers)
JULY/AUG/SEPT	30	81	58
OCT/NOV/DEC	35	80	81
JAN/FEB/MAR	35	71	47
APR/MAY/JUNE	35	55	70

GOALS AND ACTUAL NEW CLUBS CUMULATIVE



GOALS AND ACTUAL MEMBERS CUMULATIVE



DROPPED CLUBS: 7

29 CLUBS OF 61 ADDED 1 OR MORE NEW MEMBERS

GENDER DISTRIBUTION

MALE	594 (52.89%)
FEMALE	528 (47.02%)
NON BINARY	0 (0.00%)
PREFER NOT TO ANSWER	1 (0.09%)

DROPPED MEMBERS

[CLICK HERE FOR CUMULATIVE MEMBERSHIP DATA](#)

DECEASED	13
CLUB CANCELLED	62
OTHER	182
TOTAL	257

TOTAL FAMILY UNIT MEMBERS 223

FAMILY MEMBERS PAYING HALF DUES 120